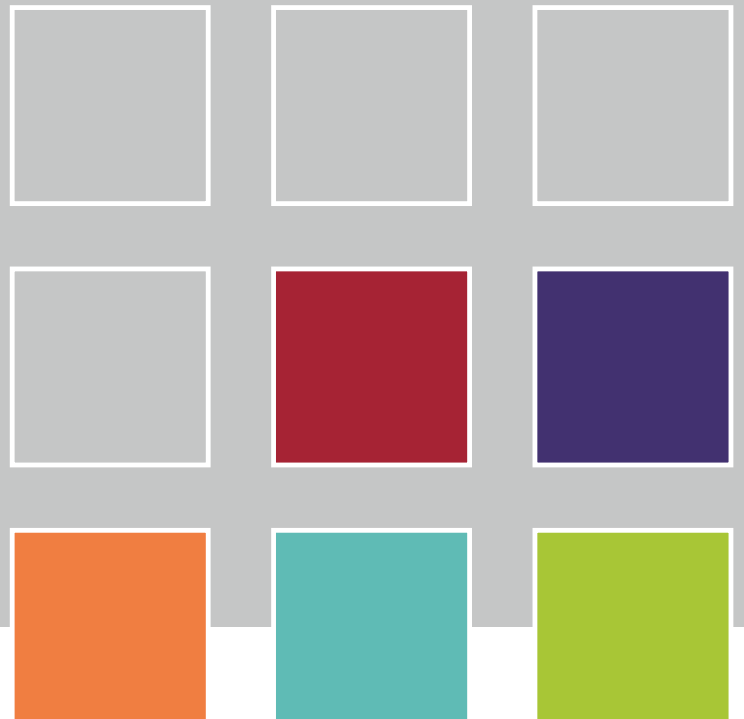




**matchmycolor**  
■ *perfect match every time, everywhere*

# Colibri® Software - Getting Started



# Colibri® Software - Getting Started

## 1. Download

Colibri can be installed from a CD by inserting the disc in the CD/DVD drive and selecting the Colibri setup file or by downloading the software from:

<http://www.matchmycolor.com>

**Support and Services > Downloads**

Select the software version to install. You will be required to enter a password to download the software. In the event the password is no longer valid contact your support person.

For more detailed information on the software download the user manual from the website. A copy of the manual is also included in the software after installation under Help.

## 2. Installation



Run the installer file as Windows **Administrator**. A wizard will guide you through the installation.

To include translations, select languages during installation setup.

**Note:** Microsoft .Net Framework is required.

If no Internet connection is available, the user can manually download it from the Microsoft website.

The SQL Server for database creation is now part of the installation package.

## 3. License Request

Start Colibri from the Windows start Menu. Select Request a License.

Fill in the form, save and send to Colibri support within 3 days.

A license file will be sent back to you within 24 Hours.

Start Colibri again from the **Start** menu and choose **Install License**. Select the license file.

Restart Colibri.

It is recommended to start Colibri one time as the Administrator.

To do this right click on the Colibri menu and select **Run as administrator**.



## 4. Database Creation

Start Colibri and go to the menu: Administration\Create Database.

Input a database name.

Select if you want to insert demo data.

Then click on 'start'.

Once database is successfully created, click on 'OK'.

In the event you want to create a central database contact your IT Administrator for assistance.



## 5. Database Connection

Go to the menu: File\Connect.

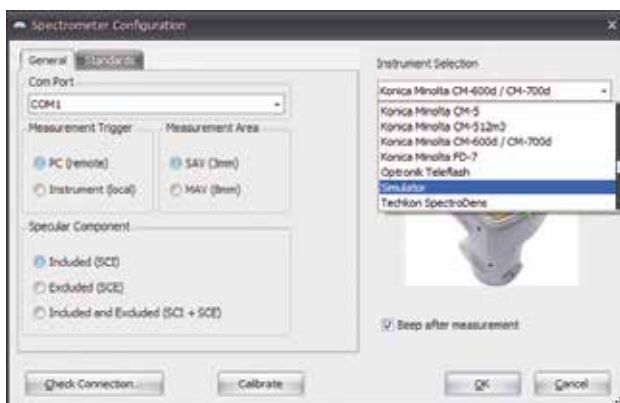
Select your database and type the default Colibri credentials.

**userID:** administrator

**password:** password



## 6. Instrument Connection



From the menu: Settings\Spectrometer, select the instrument:

Once the instrument is found, choose the COM-Port and define the measurement mode (e.g. reflectance, SCI, LAV). Then click on Check Connection. The connection with your instrument is now established. Proceed and follow the instructions to calibrate the instrument. You are now ready to start using the instrument with Colibri.



**matchmycolor**  
 ■ perfect match every time, everywhere

Colibri® platform

## Support



For more information and who to contact visit: [www.matchmycolor.com](http://www.matchmycolor.com) (Software Support)

For regional support contact our distributor or **matchmycolor LLC**

Gartenstrasse 95  
 4052, Basel  
 Switzerland

Business Hours: 09:00 – 16.00 CET  
 Mon. – Fri. (Excludes local holidays)  
 Ph. +41 61 524 00 24

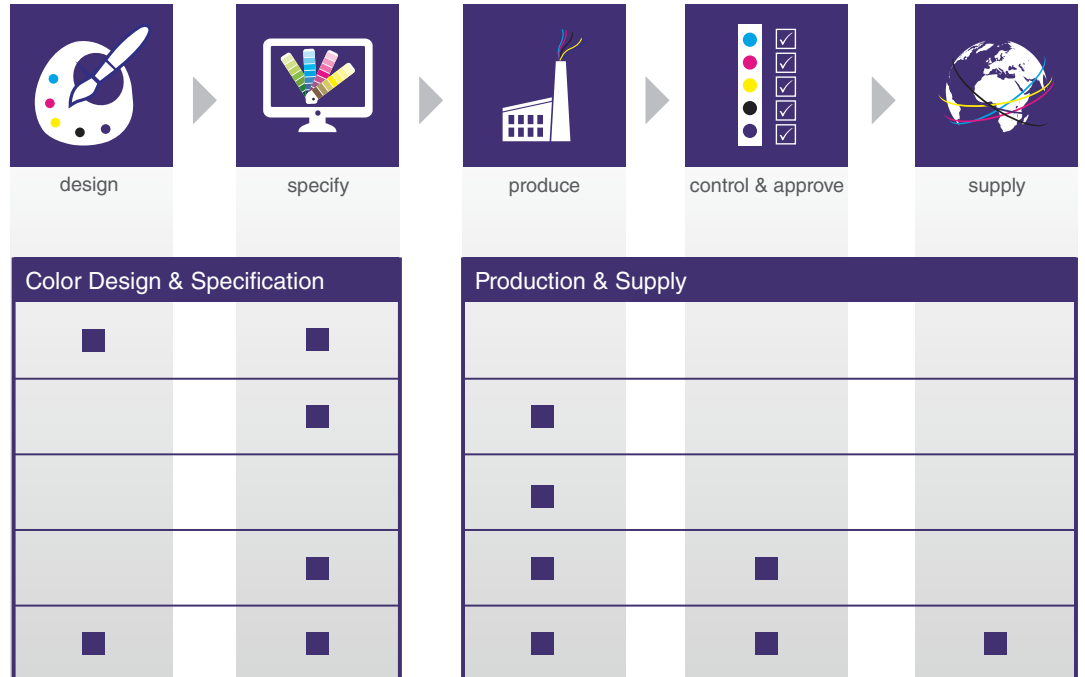
E-mail: [support@matchmycolor.com](mailto:support@matchmycolor.com)

## Colibri® Overview



Modular in design, Colibri® can help you achieve the results you require in the way you want.

Colibri® platform



Edition 2020



swiss made  
 software

© 2003 matchmycolor LLC.